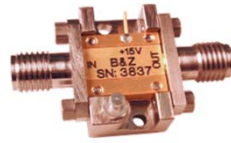


Features

- **Noise Figure: 2.5 dB (typ)**
- Unconditionally Stable at all temperatures
- Internally Regulated DC Voltage
- 50 Ohm Matched Input/Output
- Field Replaceable 3.5mm SMA connectors
- Excellent Group Delay and Phase Linearity
- 0.009 inches diameter RF In/Out feed through
- Operating Temp. -40 C to +85 C
- 3 Year Warranty

Options

- **Optimized Performance over Selected Bandwidth**
- Internally DC Block Input (Output DC Block Standard)
- Hermetically Sealed Package
- Improved Gain Flatness
- Improved IN and OUT VSWR
- Gain and Phase matching
- Lower Noise Figure



Specifications (23 °C)

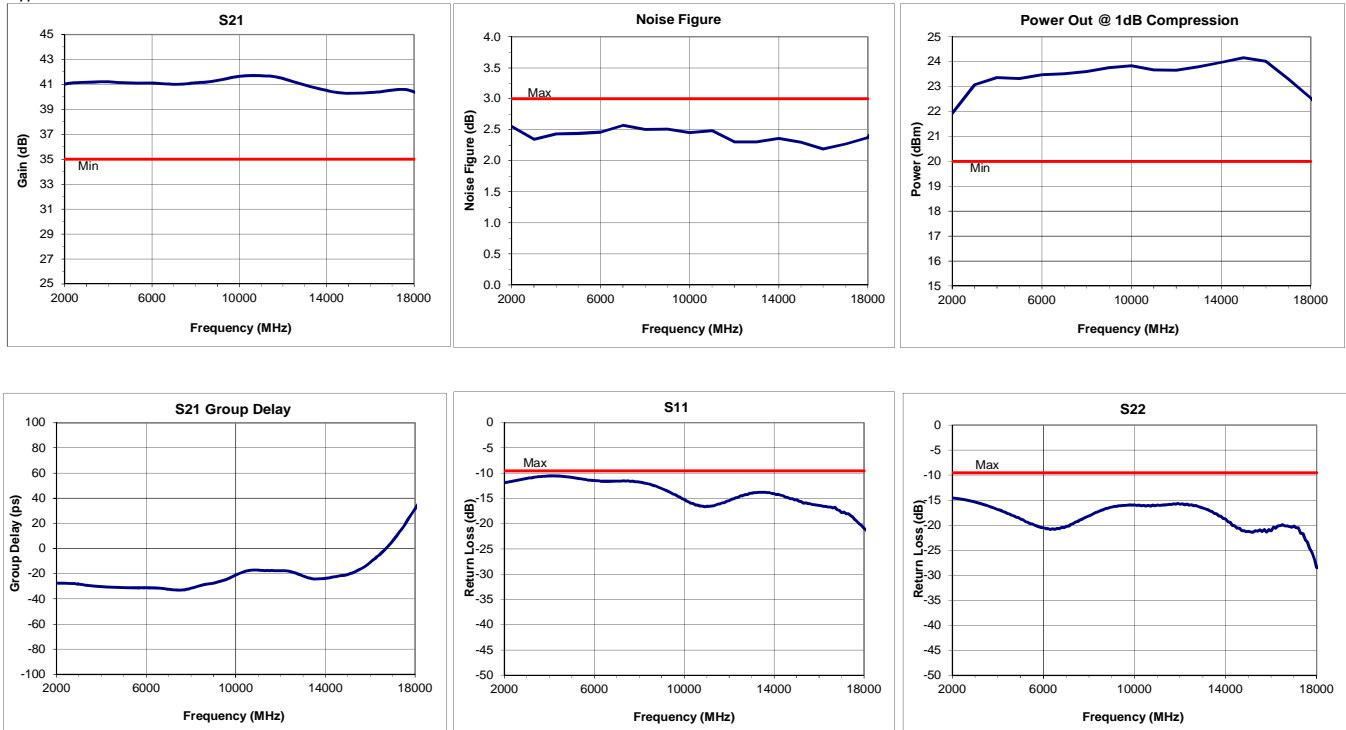
| Parameter | Min | Typ | Max | Units |
|----------------------------|--------------------|------|-------|-------|
| Frequency Range | 2 | - | 18 | GHz |
| Noise Figure* | - | 2.5 | 3.0 | dB |
| Gain | 35 | 40 | - | dB |
| Gain Flatness (+/-) | - | ±1.0 | ±1.5 | dB |
| P1 Output Power | +20 | +23 | - | dBm |
| Input VSWR | - | - | 2.0:1 | |
| Output VSWR | - | - | 2.0:1 | |
| Operating Temperature | -40 | - | +85 | °C |
| Non-Operating Temp Range | -65 | - | +85 | °C |
| RF Input Power (no-damage) | - | - | +13 | dBm |
| Humidity (non-condensing) | - | - | 95 | % |
| Voltage | +15 | +15 | +15 | VDC |
| Current | - | 305 | | mA |
| Input Impedance | 50 | | | Ohms |
| RF Connector | 3.5mm SMA - Female | | | |
| Dimensions | 29.9 x 18.7 x 7.6 | | | mm |

****CAUTION:** The amplifier input is DC-coupled but does not have low impedance to GROUND because of the requirement to extend BW down to 2GHz. **Extreme caution must be exercised to avoid Electro-static Discharge (ESD) at the input center conductor.** B&Z offers option -01 which protects the amplifier against low level ESD but connecting it directly to the output of an antenna (typical EMC application) exposes the amplifier center conductor via antenna, thereby increasing risk of ESD damage. It is the customer's responsibility to minimize Electro-static discharge (ESD) to both - the antenna and the amplifier connected to it.

If the application does not require response below 8GHz, B&Z offers other models with inductive return to GND that can offer lower NF, improved Gain, better In/Out VSWR and more robust ESD handling capacity. Please call for further information.

* Noise Source used for measurement from 0.01 to 26.5 GHz is HP346C .
NF Uncertainty (approx. 0. 1dB). 0.05 dB due to ENR of HP 346C; and 0.05 dB, due to the gain modulation of the unit, caused by the HP 346C source impedance change in the ON and OFF state.
Noise Figures and other parameters degrade below 500 MHz. Noise Figures at Cryogenic Temperatures not given due to uncertainty of measurement for very low values. Call to discuss.

Typical Data





Approx. Actual Size



Mounting Drawing



Drop In

